

Fellowes

Office Comb Binder **Pulsar+ 300™**



Please read these instructions before use.

Lire ces instructions avant utilisation.

Lea estas instrucciones antes de usarlo.

Diese Anleitungen vor Gebrauch genau durchlesen.

Prima dell'uso, si raccomanda di leggere questo manuale di istruzioni.

Dese instructies voor gebruik lezen.

Läs dessa anvisningar innan du använder apparaten.

Læs venligst denne vejledning før anvendelse. Bør ikke bortskaffes.

Lue nämä ohjeet ennen käyttöä.

Vennligst les nøye igjennom denne bruksanvisningen før bruk.

Przed użyciem proszę zapoznać się z tą instrukcją.

Перед началом эксплуатации обязательно прочтите данную инструкцию.

Παρακαλείσθε να διαβάσετε αυτές τις οδηγίες πριν χρησιμοποιήσετε το προϊόν.

Kullanmadan önce lütfen bu talimatları okuyun.

Před použitím si přečtěte tyto pokyny.

Pred použitím si prečítajte tieto pokyny.

Kérjük, hogy használat előtt olvassa el az utasításokat!

Leia estas instruções antes da utilização.

Pročitajte ove upute prije upotrebe.

Molimo da ova uputstva pročitate pre upotrebe.

Pred uporabo preberite ta navodila.

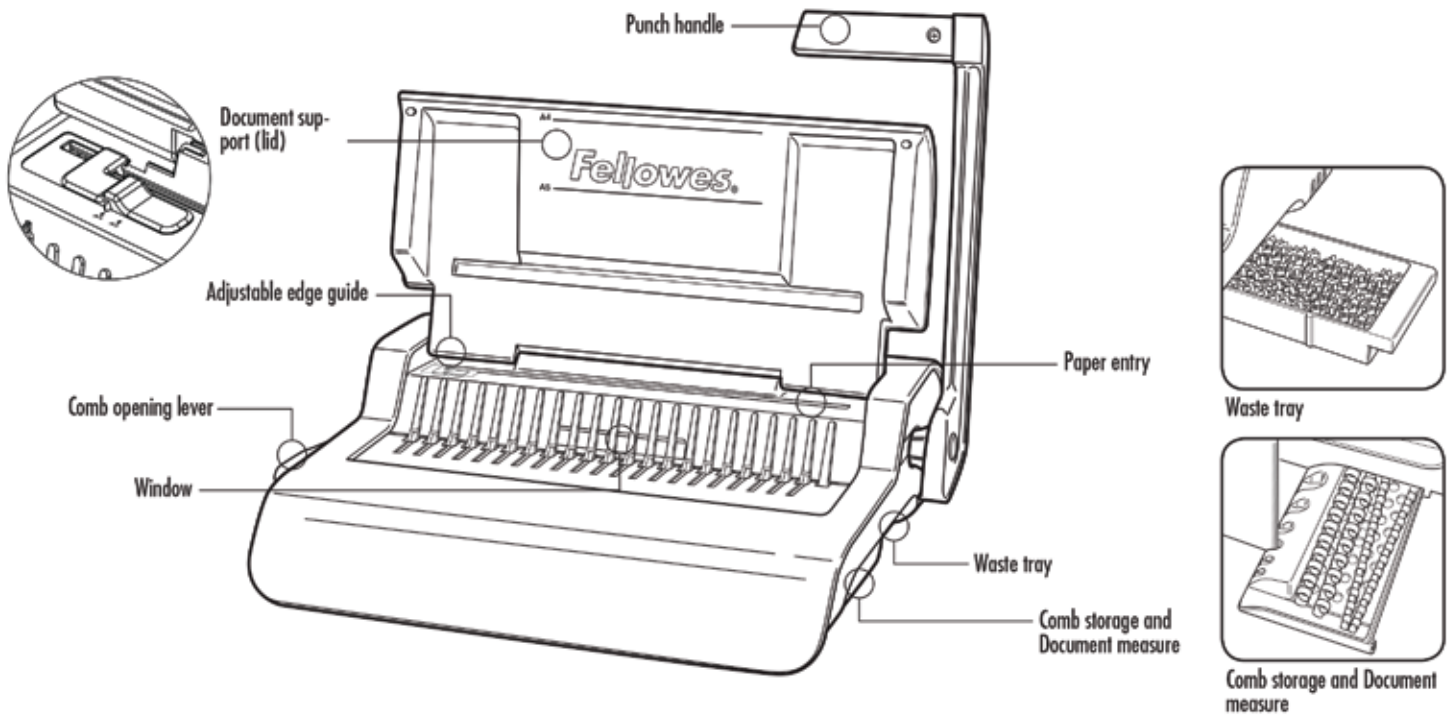
Моля, прочетете тези инструкции преди употреба.

Vă rugăm să citiți aceste instrucțiuni înainte de utilizare.

يرجى الاطلاع على الإرشادات قبل الاستعمال.

נא לקרוא הוראות אלה לפני השימוש.

ENGLISH



CAPABILITIES

Punching Capacity

Paper sheets	
70-80g / 20lb	20 sheet
Transparent covers	
100-200 micron / 4-8 mil	3 sheet
200+ micron / 8+ mil	2 sheet

Other standard covers

160-270g / 40-60 lb	3 sheet
270+g / 60+ lb	2 sheet

BINDING CAPACITY

Max comb size	38mm
Max document (80g / 20lb)	300 sheet

TECHNICAL DATA

Paper dimensions	A4	Waste tray capacity	1500 sheet
Punching slots	21	Net weight	7 kg / 15.4 lb
Slot pitch	14.28mm / 9/16"	Dimensions (LxDxH)	460 x 396 x 135mm / 18.1" x 15.6" x 15.3"
Adjustable edge guide	yes		

IMPORTANT SAFETY INSTRUCTIONS — Read Before Using!




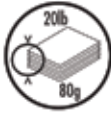
Please keep for future reference

When punching:

- always ensure the machine is on a stable surface
- test punch scrap sheets and set the machine before punching final documents

- remove staples and other metal articles prior to punching
- never exceed the machines quoted performance

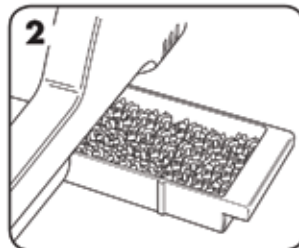
COMB DIAMETER & DOCUMENT SIZES

			
mm	inch	number of pages	
6mm	1/4"	2-20	
8mm	5/16"	21-40	
10mm	3/8"	41-55	
12mm	1/2"	56-90	
16mm	5/8"	91-120	
19mm	1 1/16"	121-150	
22mm	7/8"	151-180	
25mm	1"	181-200	
32mm	1 1/4"	201-240	
38mm	1 1/2"	241-340	

SET UP



1 Ensure the machine is on a stable surface.



2 Check waste tray is empty and correctly fitted

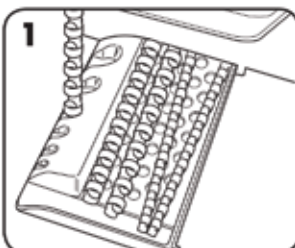


3 Lift the lid. Ensure the comb-opening lever is pushed backwards.

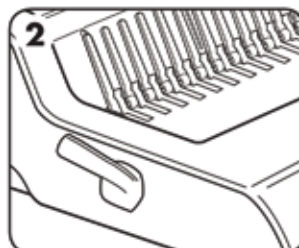


4 Lift the punch handle to its upright position.

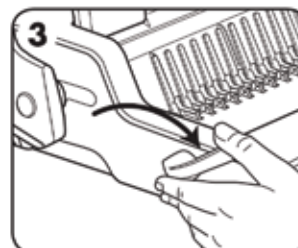
BEFORE YOU BIND



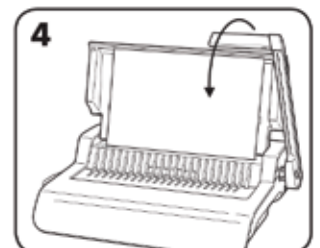
1 Select the correct comb diameter using the comb storage tray.



2 Insert the plastic comb into the mechanism.



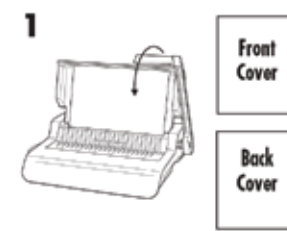
3 Pull comb-opening lever forward to open the comb.



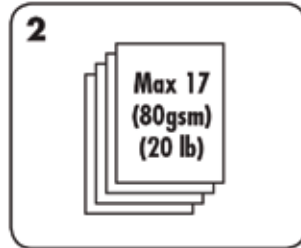
4 Test punch scrap sheets to check edge guide setting.

ENGLISH

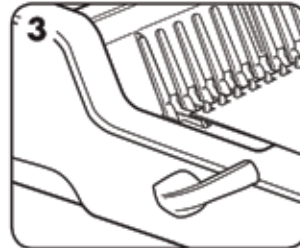
STEPS TO BIND



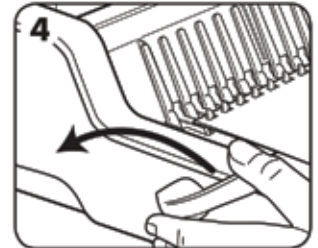
1. Punch front and back covers first.



2. Punch sheets in small batches that do not overload the machine or the user.



3. Load punched sheets directly onto the opened comb. Starting with the front of the document.



4. When all punched sheets are loaded onto the comb, push the comb lever backwards to close the comb and remove the bound document.

CORRECTING A BOUND DOCUMENT

Additional sheets may be included or removed at any time by opening and then closing the comb as previously described.

REMOVAL OF WASTE CLIPPINGS

The waste tray is located under the machine and is accessed from the right side. For best results empty the tray regularly.

STORAGE

Lower the punch handle to the horizontal position. Lower the lid. The Pulsar comb binder is designed to be stored horizontally on the desktop.

TROUBLESHOOTING

Problem	Cause	Solution
Punched holes are not central	Edge guide not set	Adjust edge guide to correct paper or cover size.
Machine will not punch	Blockage	Check waste tray is empty. Check for blockage to paper entry.
Punch holes are not parallel to edge.	Debris is stuck below dies.	Take stiff cardboard and slide into the paper entry. Move the cardboard sideways to release any stray clippings into the waste tray.
Partial holes	Sheets not correctly aligned to punch pattern.	Adjust edge guide and test punch scrap sheets until correct
Damaged hole edges	Possibly overloading the machine	Punch plastic covers with paper sheets. Reduce number of sheets being punched.
Waste tray leaks	Waste tray is not correctly inserted or 'burst feature' has activated	Check waste tray is empty and 'burst feature' is closed.