

Fellowes

Electric Premium Comb Binder

Galaxy™ e 500



Please read these instructions before use.
Do not discard: keep for future reference.

Lire ces instructions avant utilisation.
Ne pas jeter : conserver pour référence ultérieure.

Lea estas instrucciones antes de usarlo.
No las deseche: guárdelas para tenerlas como referencia.

Diese Anleitungen vor Gebrauch genau durchlesen.
Bitte nicht entsorgen: zur späteren Bezugnahme aufheben

Prima dell'uso, si raccomanda di leggere questo manuale di istruzioni. Conservare il manuale per consultarlo secondo le necessità.

Dese instructies voor gebruik lezen. Niet weggoeien, maar bewaren om later te kunnen raadplegen.

Läs dessa anvisningar innan du använder apparaten.
Släng inte bort, behåll för framtida bruk.

Læs venligst denne vejledning før anvendelse.
Bør ikke bortskaffes. Behold for fremtidig henvisning.

Lue nämä ohjeet ennen käyttöä.
Älä hävittää: säilytä myöhempää käyttöä varten.

Vennligst les nøye igjennom denne bruksanvisningen før bruk.
Ikke kast den: Ta vare på den for senere referanse.

Przed użyciem proszę zapoznać się z tą instrukcją.
Nie wyrzucać - zachować jako źródło informacji na przyszłość

Перед началом эксплуатации обязательно прочтите данную инструкцию.
Не выбрасывайте данную инструкцию: сохраните ее для последующего использования.

Παρακαλείσθε να διαβάσετε αυτές τις οδηγίες πριν χρησιμοποιήσετε το προϊόν.
Μην τις απορρίψετε: κρατήστε τις για μελλοντική αναφορά

Kullanmadan önce lütfen bu talimatları okuyun.
Atmayın: ileride başvurmak üzere saklayın.

Před použitím si přečtěte tyto pokyny.
Nelikvidujte: uschovejte pro budoucí použití.

Pred použitím si prečítajte tieto pokyny.
Nezahadzujte: odložte pre budúce použitie.

Kérjük, hogy használat előtt olvassa el az utasításokat!
Az utasításokat ne dobja ki; tartsa meg referenciaanyagként való jövőbeni használatra.

Leia estas instruções antes da utilização.
Não as deite fora: conserve-as para consulta futura.

Pročitajte ove upute prije upotrebe.
Nemojte baciti: sačuvajte za buduću upotrebu.

Molimo da ova uputstva pročitate pre upotrebe.
Nemojte ih baciti: sačuvajte ih za ubuduće.

Моля, прочетете тези инструкции преди употреба.
Не изхвърляйте: пазете за справки в бъдеще.

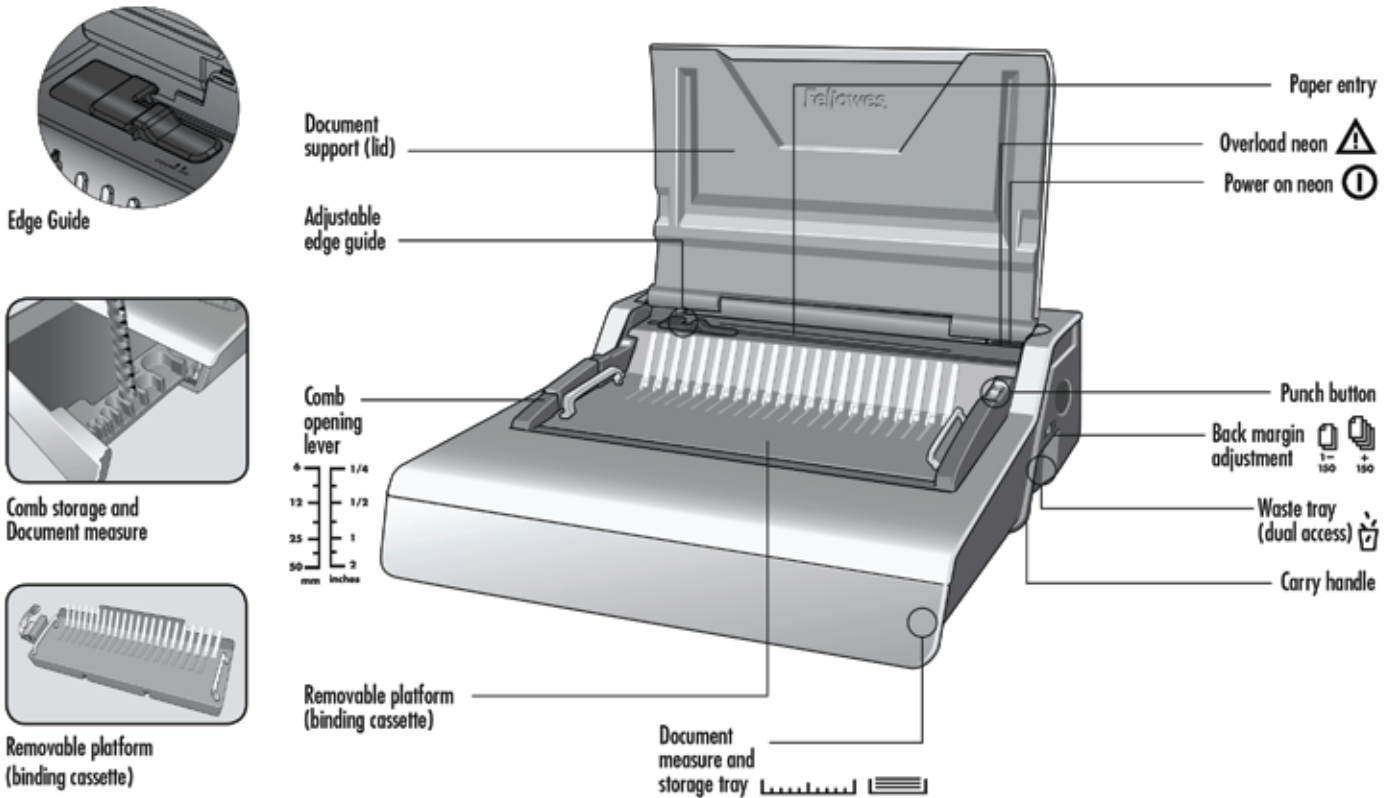
Vã rugãm sã citiți aceste instrucțiuni înainte de utilizare.
Nu aruncați: păstrați pentru o consultare ulterioară.

Pred uporabo preberite ta navodila.
Ne zavržite: shranite za poznejšo uporabo

يرجى الاطلاع على الإرشادات قبل الاستعمال.
لا يجب التخلص من هذه الإرشادات. ويرجى حفظها للرجوع إليها في المستقبل.

נא לקרוא הוראות אלה לפני השימוש.
אין להשליך: שמרו לעיונם בעתיד.

ENGLISH



CAPABILITIES

Punching Capacity

Paper sheets	
80g / 20lb	28 sheet
Transparent Covers	
100-200 micron / 4-8 mil	4 sheet
200+ micron / 8+ mil	3 sheet
Other Standard Covers	
160-270g / 40-60lb	4 sheet
270+g / 60+ lb	3 sheet
Binding Capacity	
Max comb size	51mm
Max document (80g / 20lb)	500 sheet

Technical Data

Paper dimensions	A4, A5
Punching slots	21
Adjustable back margin (min = 2.5mm, max = 4.5mm)	yes - 2 positions
Slot pitch	9/16" / 14.28mm
Adjustable edge guide	yes
Waste tray capacity	3000 sheets
Voltage	220-240V 50/60 Hz
Motor wattage	230W 1.0A
Duty Cycle	30 mins on / 30 mins off
Net weight	13.5 kg / 29.8 lb
Dimensions (HxWxD)	6.5" x 19.6" x 17.7" / 165 x 498 x 451 mm

IMPORTANT SAFETY INSTRUCTIONS — Read Before Using!



Please read before use. Please keep for future reference.

When punching;

- always ensure the machine is on a stable surface
- test punch scrap sheets and set the machine before punching final documents
- remove staples and other metal articles prior to punching
- never exceed the machines quoted performance

When binding;

- the removable binding platform can be used away from the punch unit
- always ensure the removable binding platform is on a stable surface

Keep the machine away from heat and water sources.


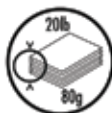


Never attempt to open or otherwise repair the machine.

Plug the machine into an easily accessible socket.

Note - this machine features a thermal cut-out device which activates when the machine is overheated during use. It will automatically reset when the machine is safe to operate.

COMB DIAMETER & DOCUMENT SIZES

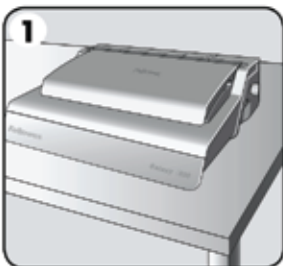
Comb diameter sizes & margin depth adjustments

 mm inch		 number of sheets	Set back margin
6mm	1/4"	2-20	 1-150
8mm	5/16"	21-40	
10mm	3/8"	41-55	
12mm	1/2"	56-90	
16mm	5/8"	91-120	
18mm	1 1/16"	121-150	
22mm	7/8"	151-180	 +150
25mm	1"	181-200	
32mm	1 1/4"	201-240	
38mm	1 1/2"	241-340	
45mm	1 3/4"	341-410	
51mm	2"	411-500	

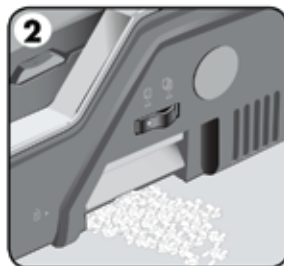
Need Help?

Customer Service... www.fellowes.com
 Let our experts help you with a solution.
 Always call Fellowes before contacting your place of purchase.

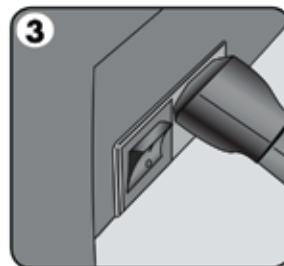
SET UP



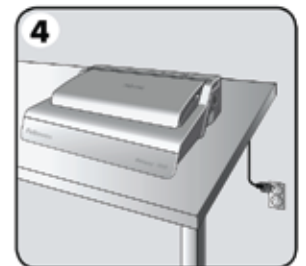
1. Ensure the machine is on a stable surface.



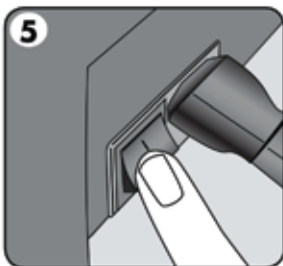
2. Check waste tray is empty and correctly fitted. The tray can be accessed from the left and right sides. The tray has a 'burst feature' that operates when the chip tray is 'over-full'.



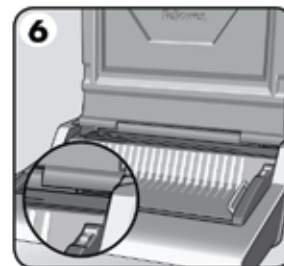
3. The machine is supplied with loose power leads. Select the correct lead for appropriate power supply.



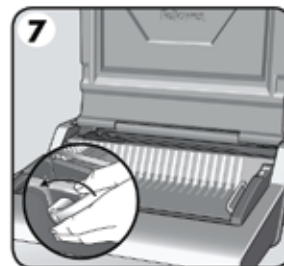
4. Plug the lead into grounded socket outlet.



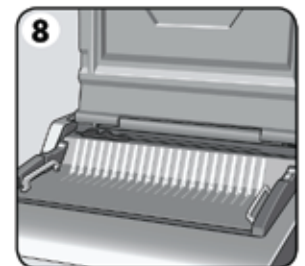
5. Switch the machine on (located at the rear of the machine).



6. Lift the lid. Check the green power neon is on.



7. Ensure the comb-opening lever is pushed backwards.

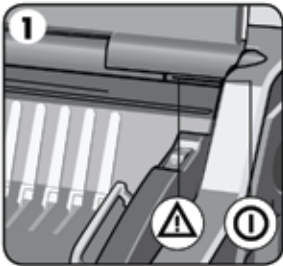


8. Ensure the binding platform is located correctly in the machine.

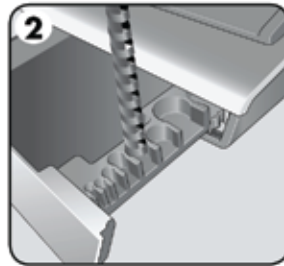


ENGLISH

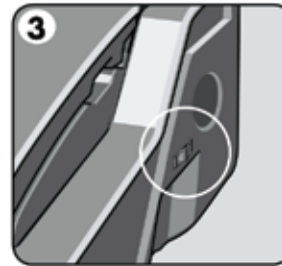
STEPS TO BIND



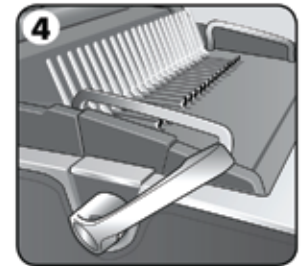
1. Check the green power neon is on.



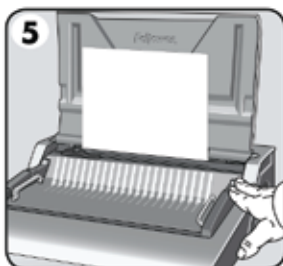
2. Select the correct comb diameter using the storage tray.



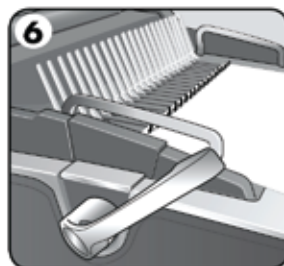
3. Select the correct back margin depth for number of sheets.



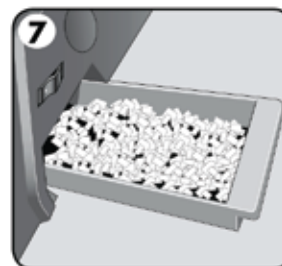
4. Insert the plastic comb into the opening mechanism. Pull comb-opening lever forward to open the comb.



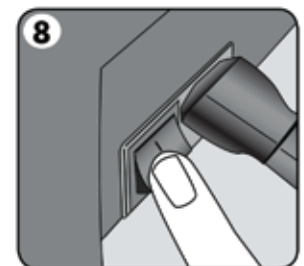
5. Test punch scrap sheets to check edge guide setting.



6. Load punched sheets directly onto the open comb.

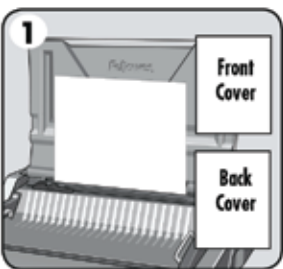


7. Empty waste tray regularly - ideally after each use.

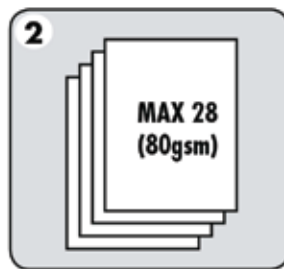


8. Switch off the machine.

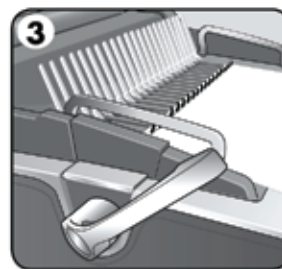
DOCUMENT BINDING



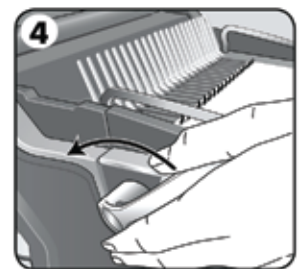
1. Ensure edge guide is set to the proper document size. Punch front and back covers first.



2. Punch sheets in small batches that do not overload the machine or the user. Adjust edge guide, if necessary.



3. Load punched sheets directly onto the opened comb. Starting with the front of the document.

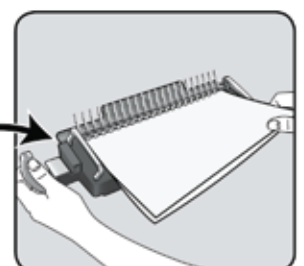
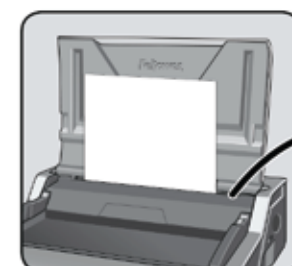


4. When all punched sheets are loaded onto the comb, push the comb lever backwards to close the comb and remove the bound document.

REMOVABLE BINDING PLATFORM

Galaxy has a unique mobile binding platform. The platform can be lifted from the base and used on a stable surface to bind documents using the normal binding procedure and also allows different users to work together. When not in use, the platform should be stored safely in the punch machine.

Satellite[®]
SYSTEM



CORRECTING A BOUND DOCUMENT

Additional sheets may be included or removed at any time by opening and then closing the comb as previously described.

REMOVAL OF WASTE CLIPPINGS

The waste tray is located under the machine and is accessed from each side. For best results empty the tray regularly. The tray should be emptied after every 50 operations to ensure no blockages occur.

STORAGE

Lower the lid. The Galaxy comb binder is designed to be stored horizontally on the desk.

TROUBLESHOOTING

Problem	Cause	Solution
No Green power neon	Machine is not switched on	Switch on machine at rear next to plug inlet and at the socket
Red standby neon	Machine has overloaded when punching	Press the punch button. The machine will withdraw the punches and re-set itself. Continue this process until the punch cycle is complete
Punched holes are not central	Edge guide not set	Adjust edge guide until hole pattern is correct
Machine will not punch	Blockage	Check waste tray is empty. Check for blockage to paper entry
Punch holes are not parallel to edge	Debris is stuck below dies	Take stiff cardboard and slide into the paper entry. Move the cardboard sideways to release any stray clippings into the waste tray
Partial holes	Sheets not correctly aligned to punch pattern	Adjust edge guide and test punch scrap sheets until correct
Sheets will not turn on the bound document	Back margin is too large for a smaller comb	Select the smaller margin depth for combs up to 18mm (11/16") in diameter (2-150 sheets) Select the larger margin depth for combs larger than 18mm (11/16") in diameter (151-500 sheets)
Damaged hole edges	Possibly overloading the machine	Punch plastic covers with paper sheets. Reduce number of sheets being punched
Waste tray leaks	Waste tray is not correctly inserted or 'burst feature' has activated	Check waste tray is empty and 'burst feature' is closed